

SERVALight Vega CL HRP WB Substrate Kit

SERVA

*serving
scientists!*

Superior Performance Combined With Low Costs

SERVALight Vega chemiluminescence HRP substrate

SERVA offers a series of highly sensitive ready-to-use kits for chemiluminescence detection of membrane bound antigens (Western Blot) or nucleic acid sequences (Southern and Northern Blot), labelled directly with Horseradish Peroxidase (HRP) or indirectly with HRP-conjugated antibodies/streptavidin.

The new member SERVALight Vega is an improved version of the well-known standard ECL western blot substrates. There is no need for change of protocol, because the substrate is directly compatible with protocols of standard ECL western blot substrates of other vendors. Superior blotting results combined with lower costs make the substrate the first choice for daily routine analysis.

The substrate is readily prepared by mixing component A (luminol/enhancer solution) with component B (stabilized peroxide solution) in a one-to-one ratio.

- High signal intensity, low picogram limit of detection
- Low background even after long exposures
- High signal/noise ratio
- Working solution is stable for minimum 5 days – reproducible results, less waste
- Primary antibody dilution 1:100 -1:5000
- Secondary antibody dilution 1:1000 – 1:15.000

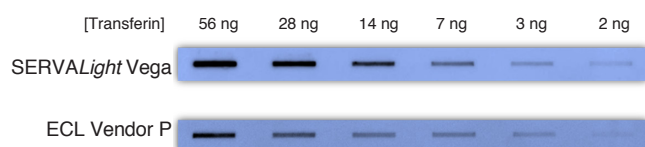


Fig. 1: Human transferrin was diluted (56 ng to 2 ng) and electrophoresis was performed. The gel was transferred to PVDF membrane, blocked and incubated with 1:1000 rabbit anti-transferrin. After washing, membranes were incubated with 1:15,000 of HRP-conjugated goat anti-rabbit antibody. The membrane was washed again and then incubated with SERVALight Vega. Exposure time 1 min.

Sensitivity

SERVALight type	Signal intensity	Signal duration	Protein quantity	Detection limit
Vega	Standard	Short	High abundance	Low picogram
Polaris	Medium	Good	High abundance	Low picogram
Eos	High	Long	Medium abundance	High femtogram
EosUltra	Very high	Very long	Low abundance	Mid femtogram
Helios	Extreme	Moderate	Very low abundance	Low femtogram

Specifications

SERVALight type	Primary Ab dilution	Secondary Ab dilution	Working solution stability	Concentration
Vega	1:100 – 1:5,000	1:1,000 – 1:15,000	5 days	0.1 ml/1 cm ²
Polaris	1:500 – 1:5,000	1:20,000 – 1:100,000	24 h	
Eos	1:1,000 – 1:15,000	1:25,000 – 1:150,000	24 h	
EosUltra	1:5,000 – 1:50,000	1:50,000 – 1:250,000	8 h	
Helios	1:5,000 – 1:100,000	1:100,000 – 1:500,000	8 h	

Ordering Information

Product	Quantity	Cat. no.
SERVALight Vega CL HRP WB Substrate Kit	50 ml	42588.01
	250 ml	42588.02
	500 ml	42588.03
SERVALight Polaris CL HRP WB Substrate Kit	100 ml	42584.01
	250 ml	42584.02
	500 ml	42584.03
SERVALight Eos CL HRP WB Substrate Kit	50 ml	42585.01
	250 ml	42585.02
	500 ml	42585.03
SERVALight EosUltra CL HRP WB Substrate Kit	20 ml	42586.01
	100 ml	42586.02
	200 ml	42586.03
SERVALight Helios CL HRP WB Substrate Kit	20 ml	42587.01
	100 ml	42587.02
	200 ml	42587.03